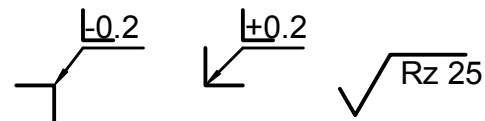
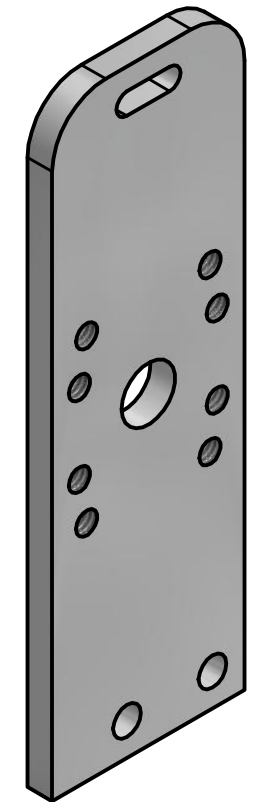



| HOLE TABLE | | | |
|------------|-------|-------|-------------|
| HOLE | XDIM | YDIM | DESCRIPTION |
| A1 | 3,23 | 36,08 | M2.5x0.45 |
| A2 | 14,77 | 36,08 | M2.5x0.45 |
| A3 | 2,56 | 32,22 | M2.5x0.45 |
| A4 | 15,44 | 32,22 | M2.5x0.45 |
| A5 | 2,56 | 24,78 | M2.5x0.45 |
| A6 | 15,44 | 24,78 | M2.5x0.45 |
| A7 | 3,23 | 20,92 | M2.5x0.45 |
| A8 | 14,77 | 20,92 | M2.5x0.45 |
| B1 | 9,00 | 28,50 | Ø5,00 THRU |
| C1 | 7,00 | 3,00 | Ø2,60 THRU |
| C2 | 15,00 | 3,00 | Ø2,60 THRU |

ISO (2 : 1)



| | | | | | | |
|--|--|---------------------|--------------------------|---|------------|---|
| Designed by A. Ryll Date 03.05.2016 | | Encoderhalter | | | | |
| Checked by | | Part Number 25 | |  | | |
| Date | | Edges: ISO 13715 | Surfaces: EN ISO 1302 | | | General Tolerances DIN ISO 2768 - mK |
| Material EN AW 6065 | | | Scale 2:1 | Rev C | Size A4 | Sheet 1 / 1 |